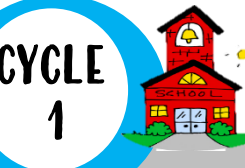
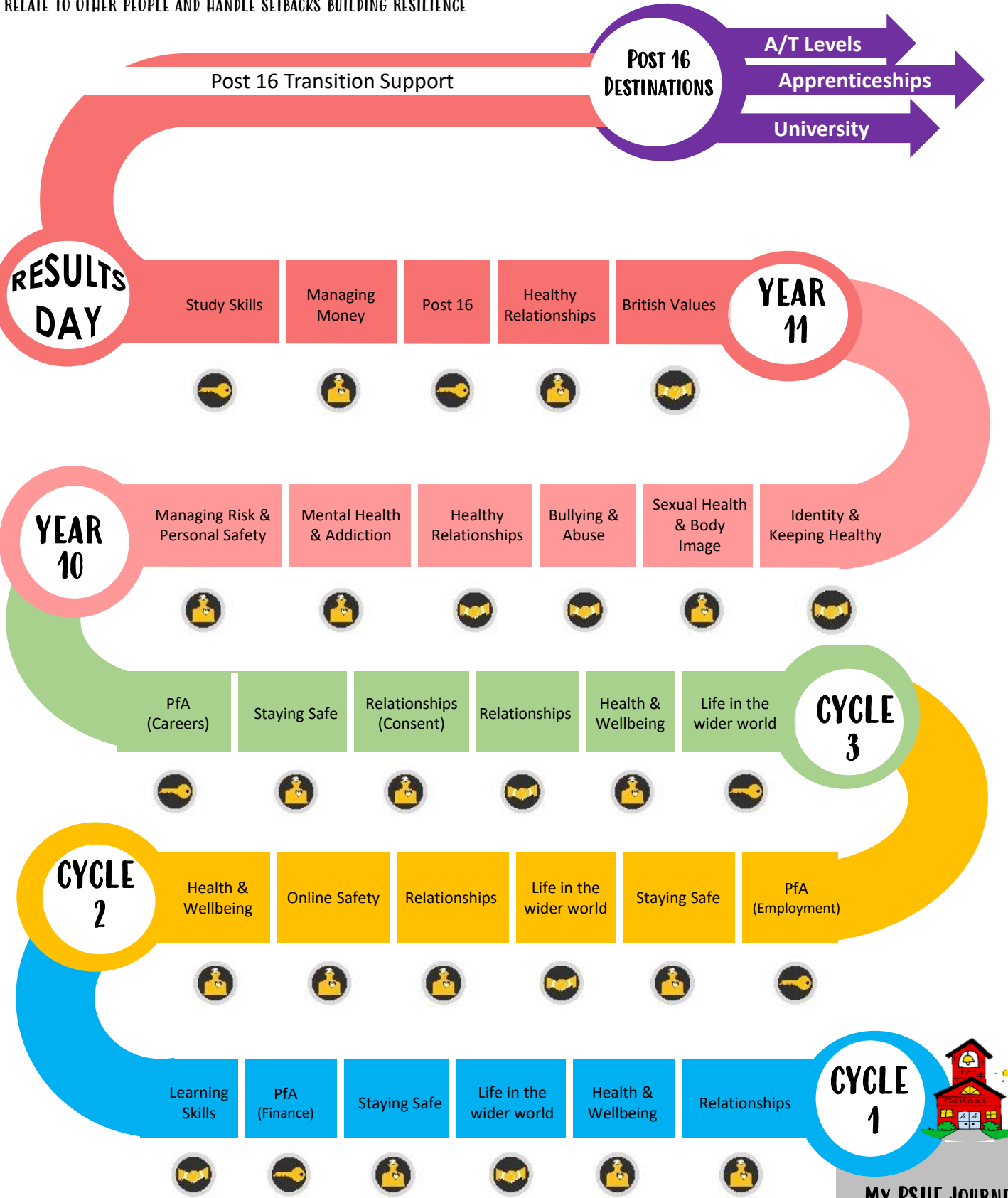


PSHE LEARNING JOURNEY

KEY OBJECTIVES: TO EQUIP OUR LEARNERS WITH THE KNOWLEDGE, UNDERSTANDING, POSITIVE ATTITUDES AND PRACTICAL SKILLS TO LIVE, HAPPY, HEALTHY, SAFE, PRODUCTIVE AND FULFILLED LIVES. ENABLING LEARNERS TO BE ABLE TO REFLECT ON AND CLARIFY THEIR OWN VALUES AND ATTITUDES AND EXPLORE THE COMPLEX AND SOMETIMES CONFLICTING RANGE OF VALUES AND ATTITUDES THEY MAY ENCOUNTER NOW AND IN THE FUTURE. TO PROMOTE SAFE, EQUAL CARING AND ENJOYABLE RELATIONSHIPS, INCLUDING FRIENDSHIPS, FAMILIES, CONSENT, RELATIONSHIP ABUSE, SEXUAL EXPLOITATION AND SAFE RELATIONSHIPS ONLINE. TO FOSTER FOSTERS GENDER EQUALITY AND LGBT+ (LESBIAN, GAY, BISEXUAL, TRANS) EQUALITY AND CHALLENGES ALL FORMS OF DISCRIMINATION IN LESSONS AND IN EVERY-DAY SCHOOL LIFE. WHILST DEVELOPING A LEARNER'S OWN SENSE OF IDENTITY, THEIR CAPACITY TO RELATE TO OTHER PEOPLE AND HANDLE SETBACKS BUILDING RESILIENCE



MY PSHE JOURNEY STARTS HERE